



# OF KETCHIKAN

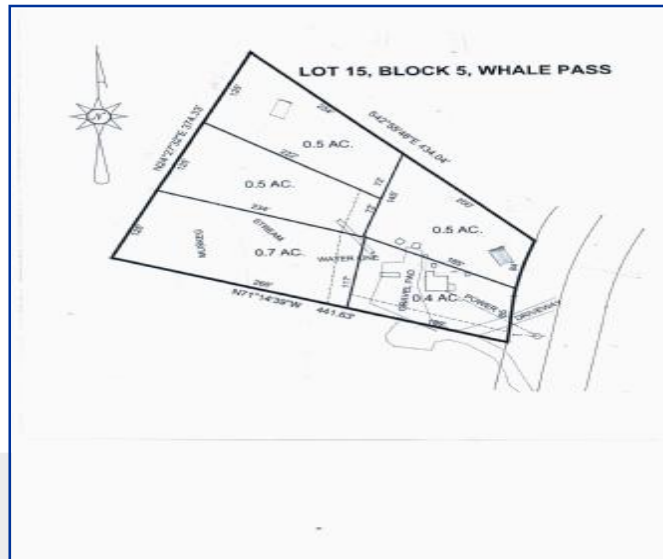
2506 First Avenue  
(907) 225.6191

[www.RemaxofKetchikan.com](http://www.RemaxofKetchikan.com)

## Whale Pass, Prince of Wales



You can call it a starter home or deluxe fishing lodge but whatever you call it, it is situated on an incredible half acre just steps away from the mouth of one of the islands premiere salmon run rivers. The cabin is still under construction and will accommodate six comfortably. This extraordinary island hosts unbelievable fishing, hunting, and sightseeing.



Price	<b>\$165,000</b>	Name	Payne
Type	Land-Remote	MLS #	9601
Bedrooms	1	Lot Size	21,780 .5
Bathrooms	1	Roof	Metal
App.Sq.Ft.	792	Age	2009
Foundation	Post & Pad	Water	Cistern
Garage		Zoning	
Heat	Woodstove		
Legal Dscp.	Lot 15D, Block 5, ASLS 2000-25		
Appliances			

List Agent Michal Beth Elerding 617-0691



Equal Housing Opportunity

**MLS**

Property Information is collected in good faith and not guaranteed against errors.

