



OF KETCHIKAN

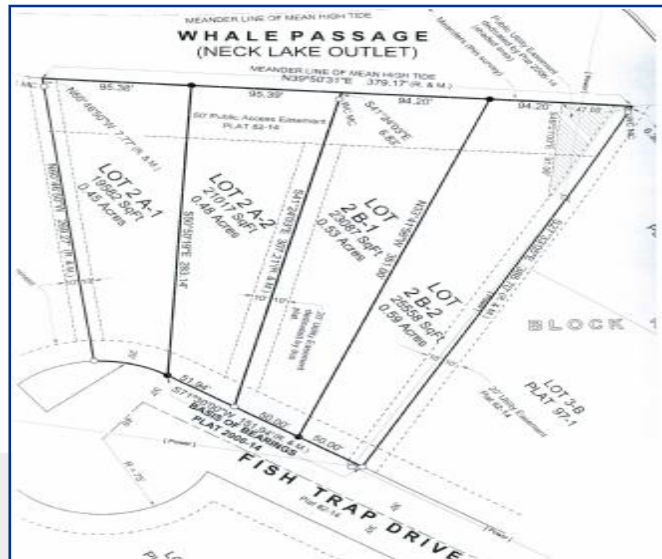
2506 First Avenue
(907) 225.6191

www.RemaxofKetchikan.com

Whale Pass, Prince of Wales



Lot is situated at the mouth of the island's premiere salmon run river. You can view the river to the left and the ocean to the right. Excellent fishing for 20# silvers, pinks, dolly varden, and you can set your crab pots nearby. Spend your fishing and hunting seasons in a perfect setting and build the cabin of your dreams! Approximate size of the lots: Lot size is 25,558 SF or .59 acre. A rare find!



Price	\$125,000	Name	Payne
Type	Land-Remote	MLS #	
Bedrooms		Lot Size	25,558 .59
Bathrooms		Roof	
App.Sq.Ft.		Age	
Foundation		Water	
Garage		Zoning	
Heat			
Legal Dscp.	Lot 2B-2 , Block 1, Plat No. 2006-14 Psg		
Appliances			

List Agent Michal Beth Elerding 617.0691



Equal Housing Opportunity

MLS

Property Information is collected in good faith and not guaranteed against errors.

